

*Port
Neches-
Groves
Independent
School
District*



*Learn from Yesterday...
Understand Today...
Plan for Tomorrow*

Demographic
Study
Fall 2015



TEMPLETON
DEMOGRAPHICS

Economic Conditions – Beaumont MSA (October 2015)



Beaumont
Unemployment Rate

-0.6%

- U.S. 4.8%
- Texas 4.5%
- Beaumont-Port Arthur MSA 6.6%
- Beaumont 6.1%



3.6%

Job Growth
Beaumont MSA

- 5,900 new jobs created in the last 12 months



2,057

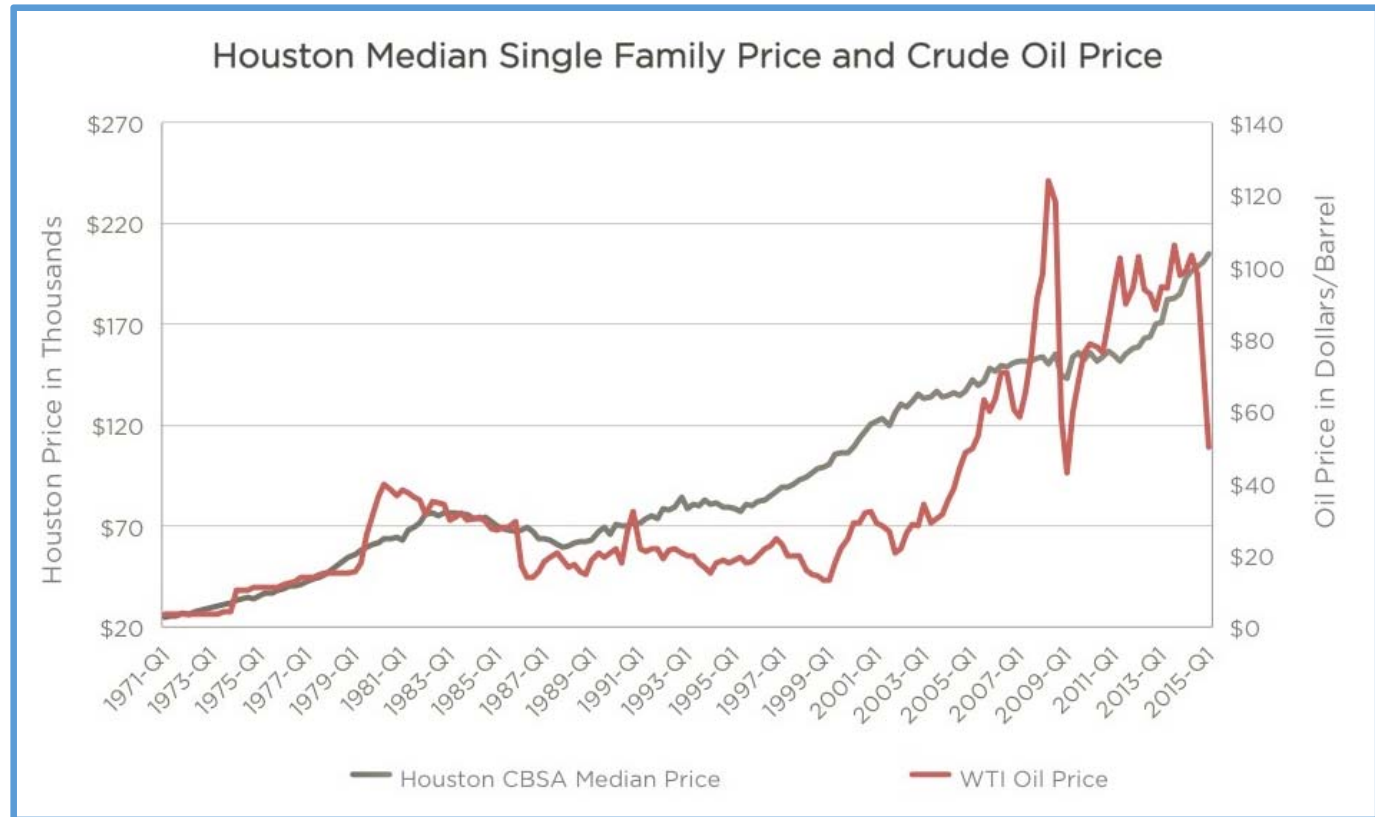
Annual SF Permits
Beaumont MSA

- 359 more than the same period in 2014



Houston Economic Overview

A Cooling in the Oil Boom



- Oil prices are forecasted to remain below \$60 a barrel through the first half of 2016, and below \$70 a barrel by 4Q16
- The U.S. crude oil production is at its highest rates in three decades
- Housing prices will continue to rise, and inventory will rise as demand is cooled slightly
- Houston builders are still forecasted to build 32,500 homes in 2015, compared to 30,000 homes in 2014
- Current Houston housing demand is for 35,000 homes a year
- Houston is currently on pace to permit approximately 37,000 homes in 2015



Local Economic Conditions

Hospital Being Remodeled

- In Groves, the former Renaissance Hospital has been purchased and is currently under new ownership
- The hospital will be remodeled and will open as a new medical facility
- The Renaissance Hospital was closed in 2013, it formerly provided 75 to 80 jobs for the city of Groves



Brewery Opening Downtown

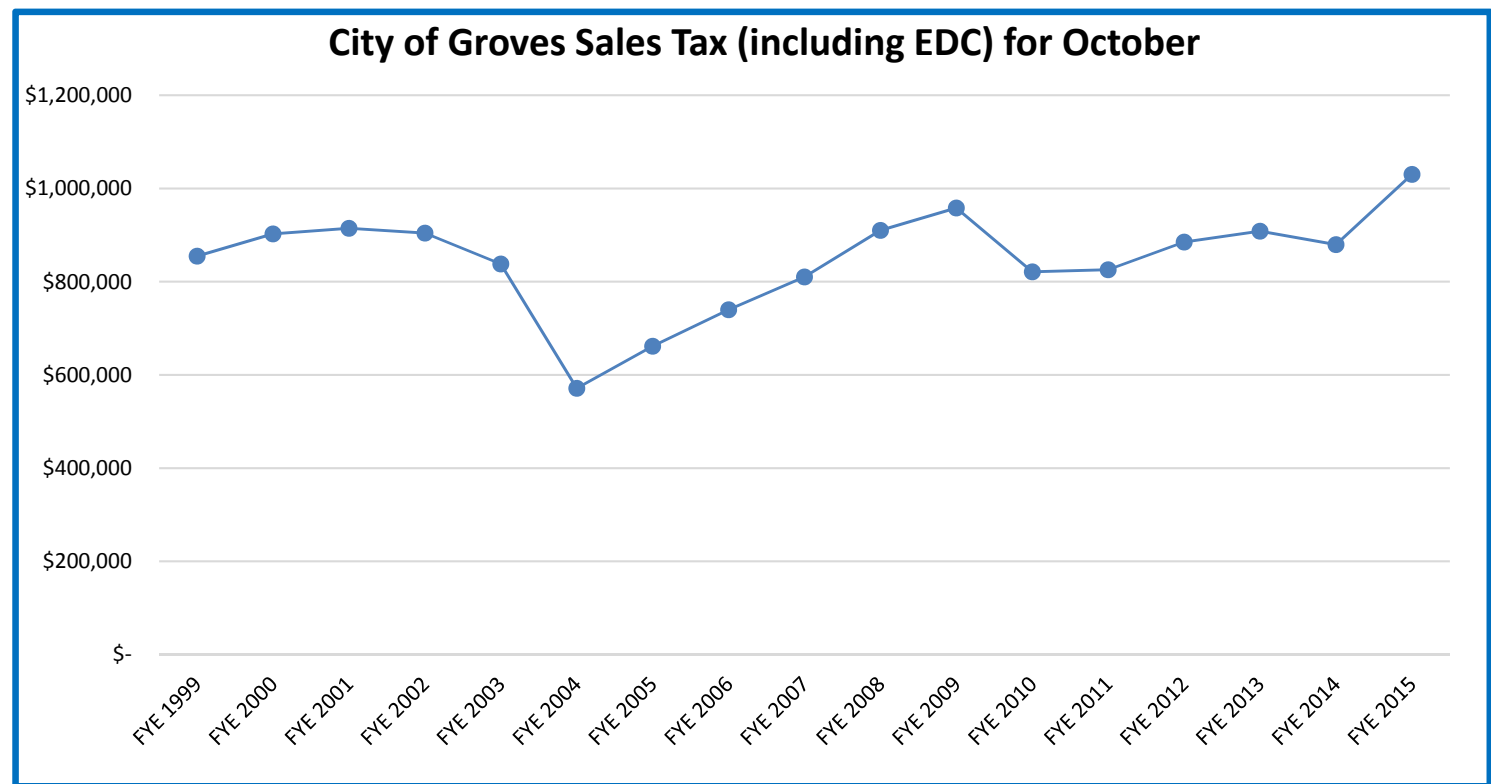
- Port Neches approved a Brewery and Pub at 1108 Port Neches Avenue, in a historic building downtown
- The brewery anticipates opening in spring of 2016 after obtaining a liquor license
- The city committed \$800,000 for a downtown revitalization project this summer

City of Groves Cost of Peace and Dignity Program

- The city of Groves has a neighborhood revitalization program with more than 400 properties identified since its start
- 170 homes have been razed in an effort to rebuild city neighborhoods
- 220 homes have been built
- Currently, Groves has 23 homes under construction, the most in the program's history, and more than their average annual rate
- 24 homes have been razed in the last 2 years, while 44 homes have been built
- For every dollar spent, the city has seen a dollar return on value of \$46.60
- These revitalization efforts could yield school-aged children



Local Economic Conditions



- The City of Groves had the highest Sales Tax in more than a decade in FY 2015
- The city had more than \$1.03 million in sales tax revenue
- This is a 17.1% rise over FY 2014



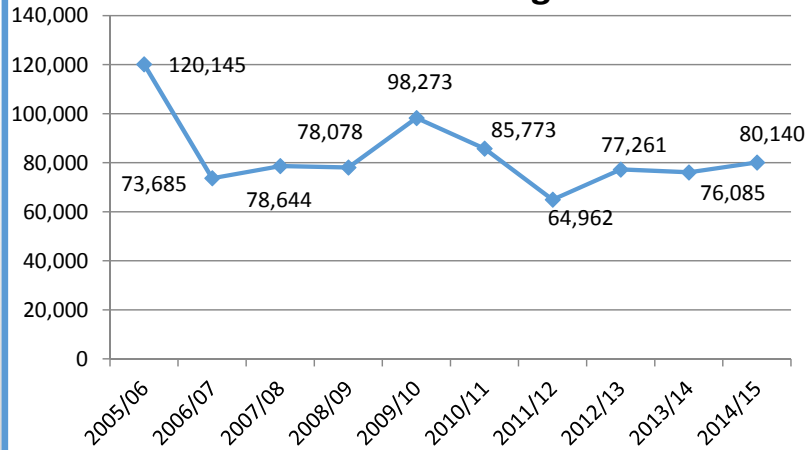


Texas Enrollment Trends

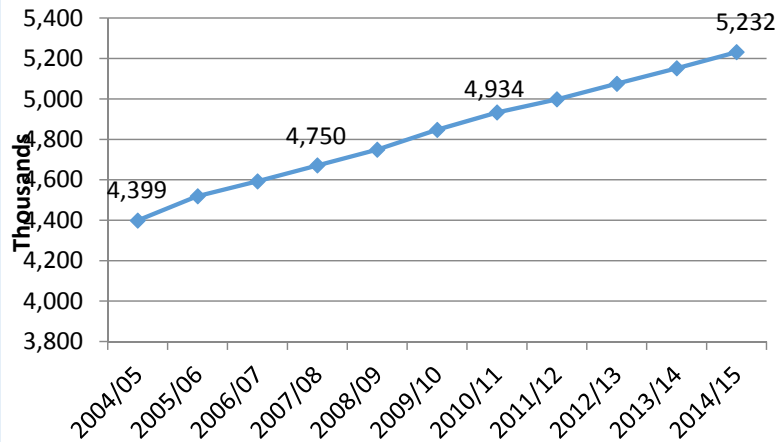
2014/15 State Enrollment

Total Enrollment	5,232,065
Total Growth	80,140
Percent Growth	1.5%

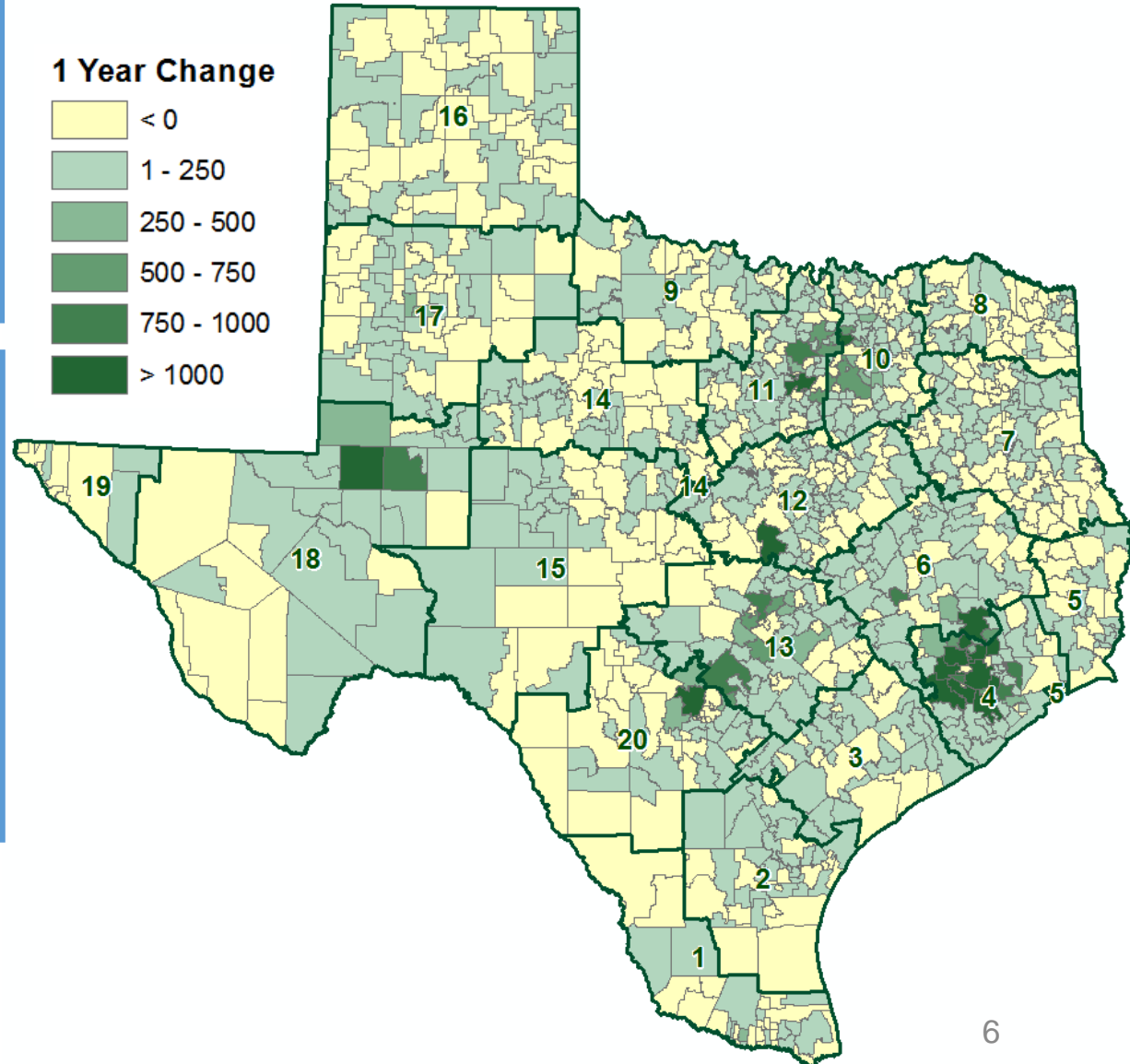
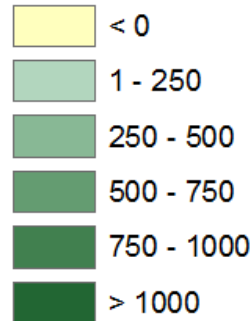
Enrollment Change



Total State Enrollment



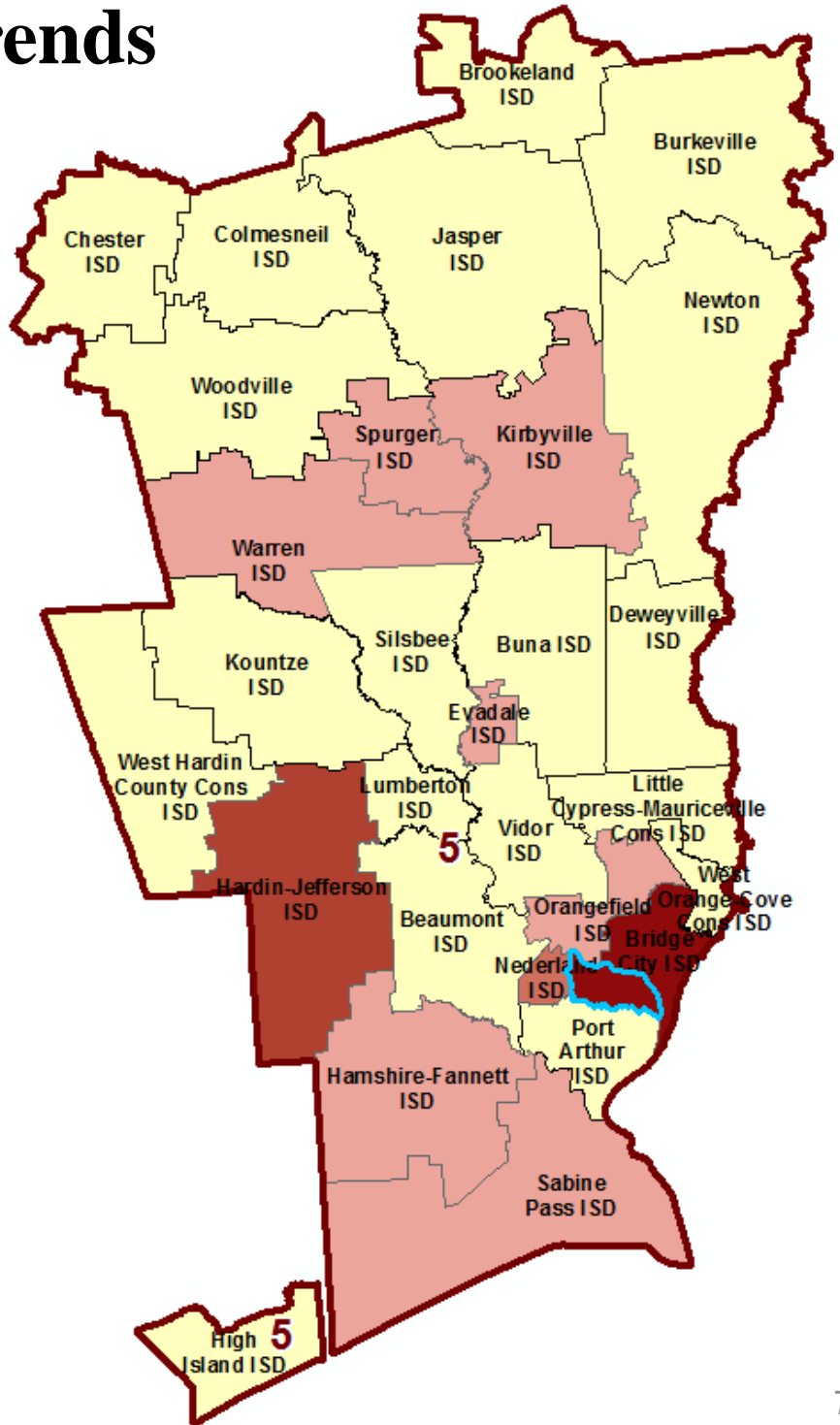
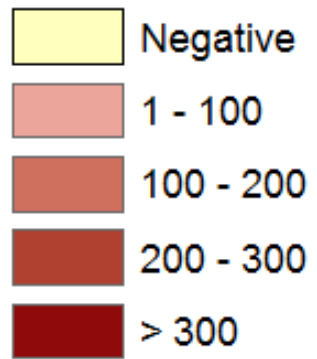
1 Year Change





Region 5 Enrollment Trends

5 Year Change





Region 5 Enrollment Trends

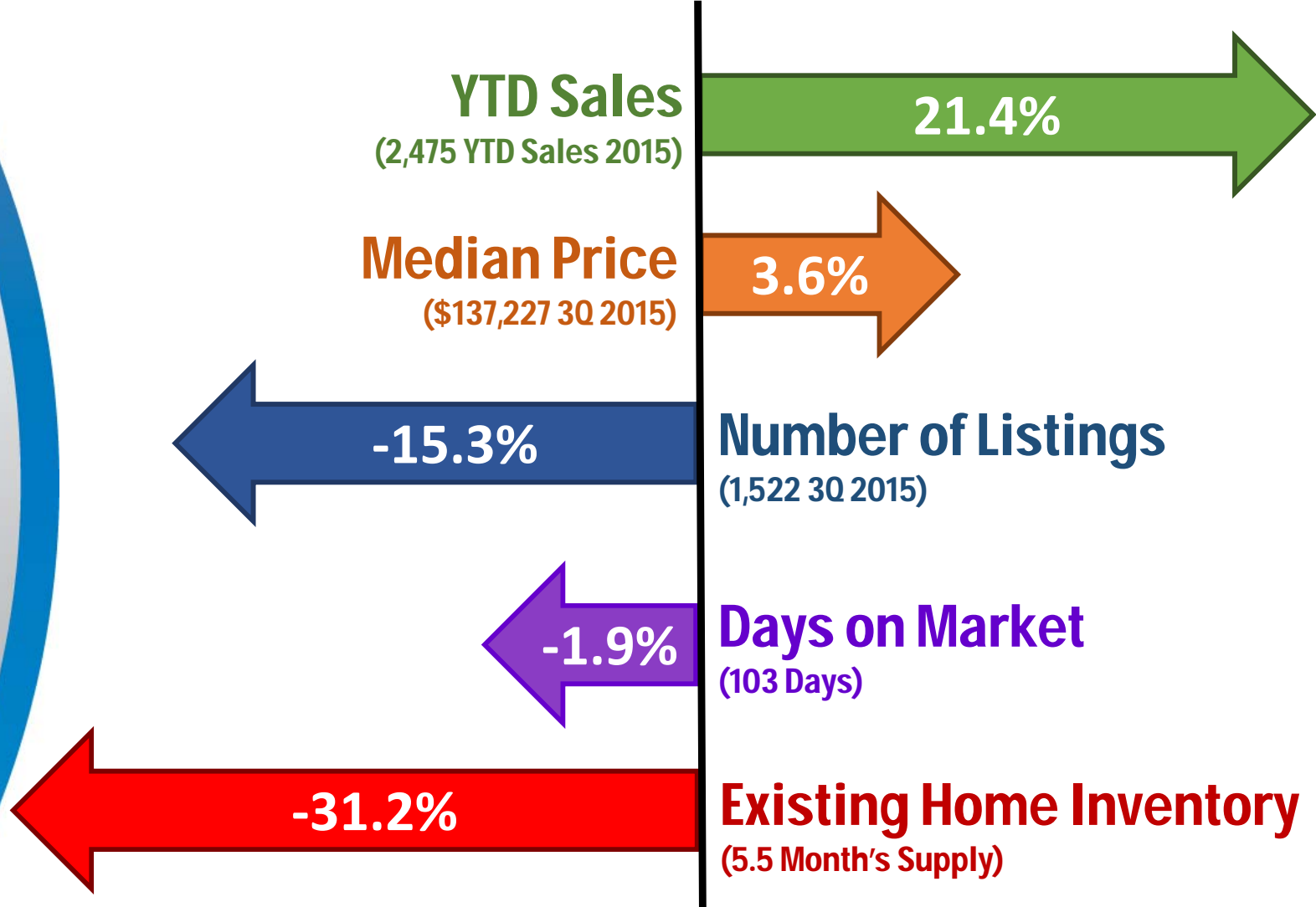
Rank	District	2009/10 Enrollment	2014/15 Enrollment	5-YEAR Change (09/10-14/15)	5-YEAR PCT Growth
1	Bridge City ISD	2,486	2,818	332	13.4%
2	Port Neches-Groves ISD	4,593	4,915	322	7.0%
3	Hardin-Jefferson ISD	2,014	2,228	214	10.6%
4	Nederland ISD	5,041	5,207	166	3.3%
5	East Chambers ISD	1,297	1,425	128	9.9%
6	Sabine Pass ISD	304	379	75	24.7%
7	Spurger ISD	362	413	51	14.1%
8	Evadale ISD	451	482	31	6.9%
9	Hamshire-Fannett ISD	1,757	1,786	29	1.7%
10	Orangefield ISD	1,758	1,782	24	1.4%
11	Warren ISD	1,223	1,230	7	0.6%
12	Kirbyville ISD	1,477	1,480	3	0.2%
13	Brookeland ISD	424	419	-5	-1.2%
14	Woodville ISD	1,307	1,302	-5	-0.4%
15	Hull-Daisetta ISD	500	491	-9	-1.8%
16	Chester ISD	185	175	-10	-5.4%
17	Lumberton ISD	3,900	3,889	-11	-0.3%
18	West Hardin County Cons ISD	597	584	-13	-2.2%
19	Burkeville ISD	311	293	-18	-5.8%
20	Buna ISD	1,494	1,462	-32	-2.1%





Beaumont-Port Arthur 3Q15 Market Report

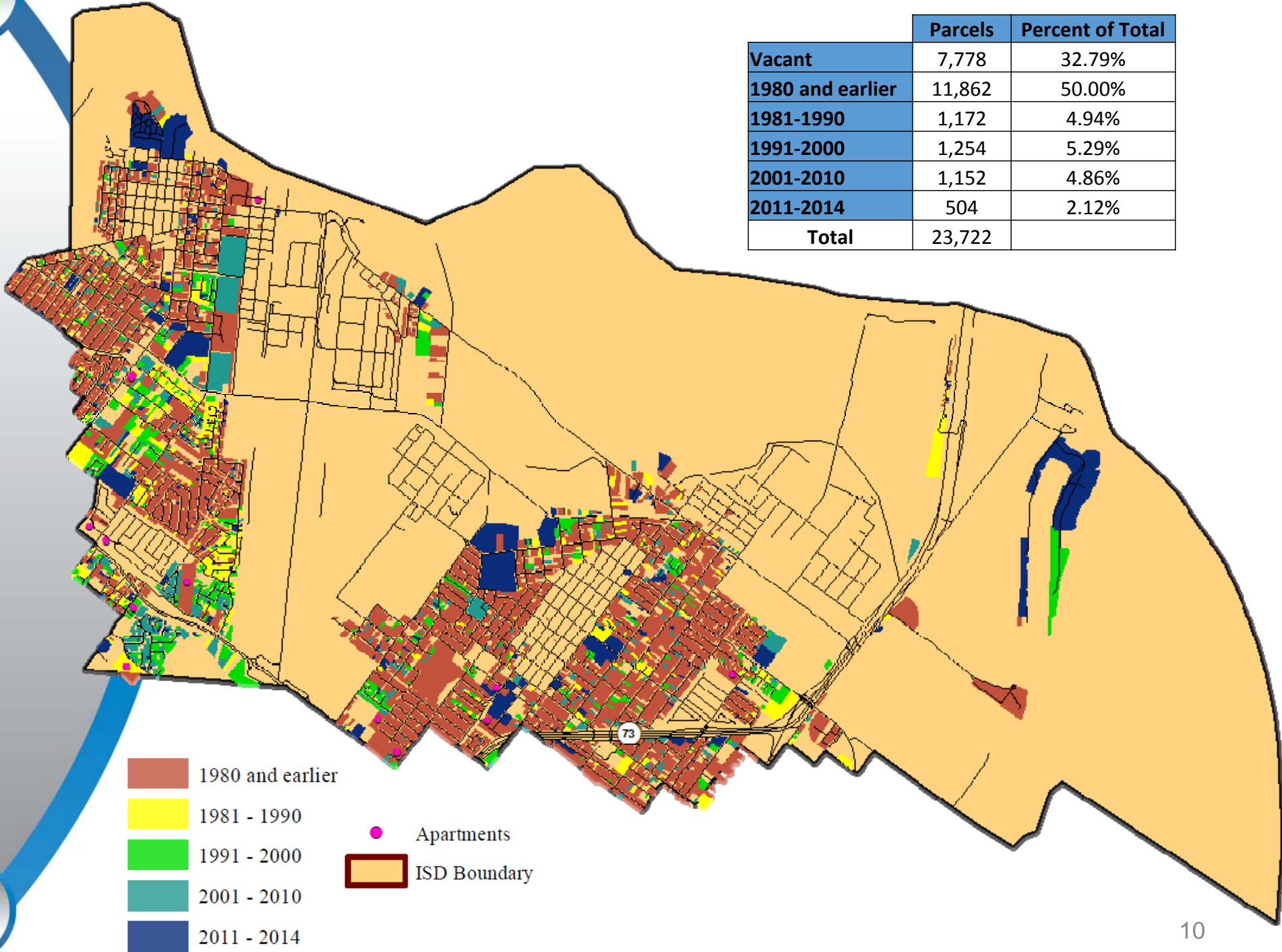
Year Over Year Comparisons





Port Neches-Groves ISD Year Built

	Parcels	Percent of Total
Vacant	7,778	32.79%
1980 and earlier	11,862	50.00%
1981-1990	1,172	4.94%
1991-2000	1,254	5.29%
2001-2010	1,152	4.86%
2011-2014	504	2.12%
Total	23,722	





Future Subdivision

Indian Springs



Indian Springs

- 141 total units to be built in 3 phases
- Phase 1 expected to break ground January 2016
- Van Buren Elementary
- City of Groves

Port Arthur ISD



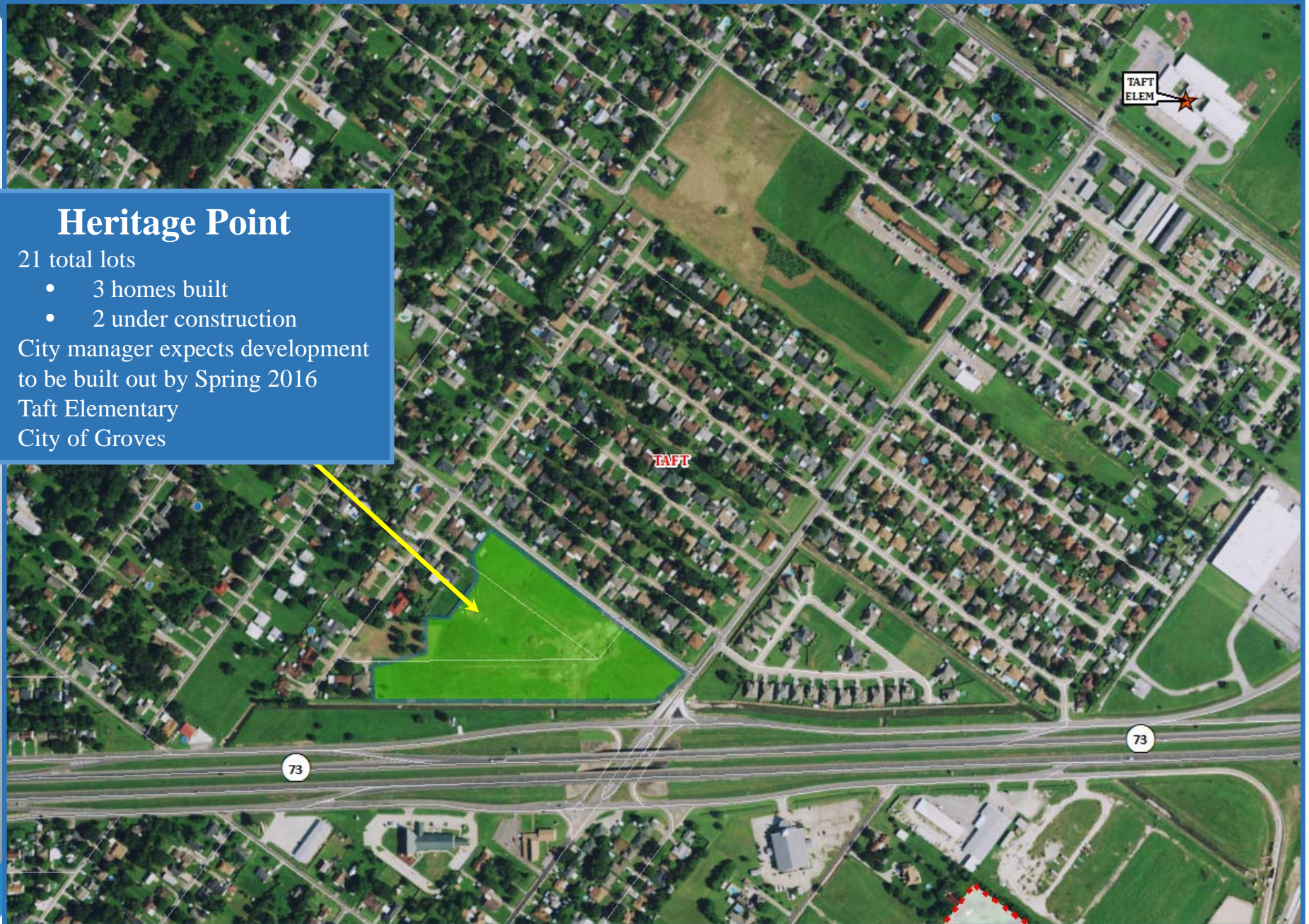


Active Subdivision

Heritage Point

Heritage Point

- 21 total lots
 - 3 homes built
 - 2 under construction
- City manager expects development to be built out by Spring 2016
- Taft Elementary
- City of Groves





Future Subdivision

Jules II

Jules II

- 23 total lots
- Construction has not started
 - Utilities have not yet been run
- City anticipates 3-6 months before home construction begins
- Woodcrest Elementary
- City of Port Neches

Orangefield
ISD

Neches River

WOODCREST
ELEM

WOODCREST

WEST GROVES
EARLY
LEARNING CTR





Active Subdivision

K.L. Butler Subdivision



K.L. Butler Subdivision

- 9 total lots
 - 5 homes built to date
 - 2 under construction
 - 1-2 lots remain for sale
- Taft Elementary
- City of Groves



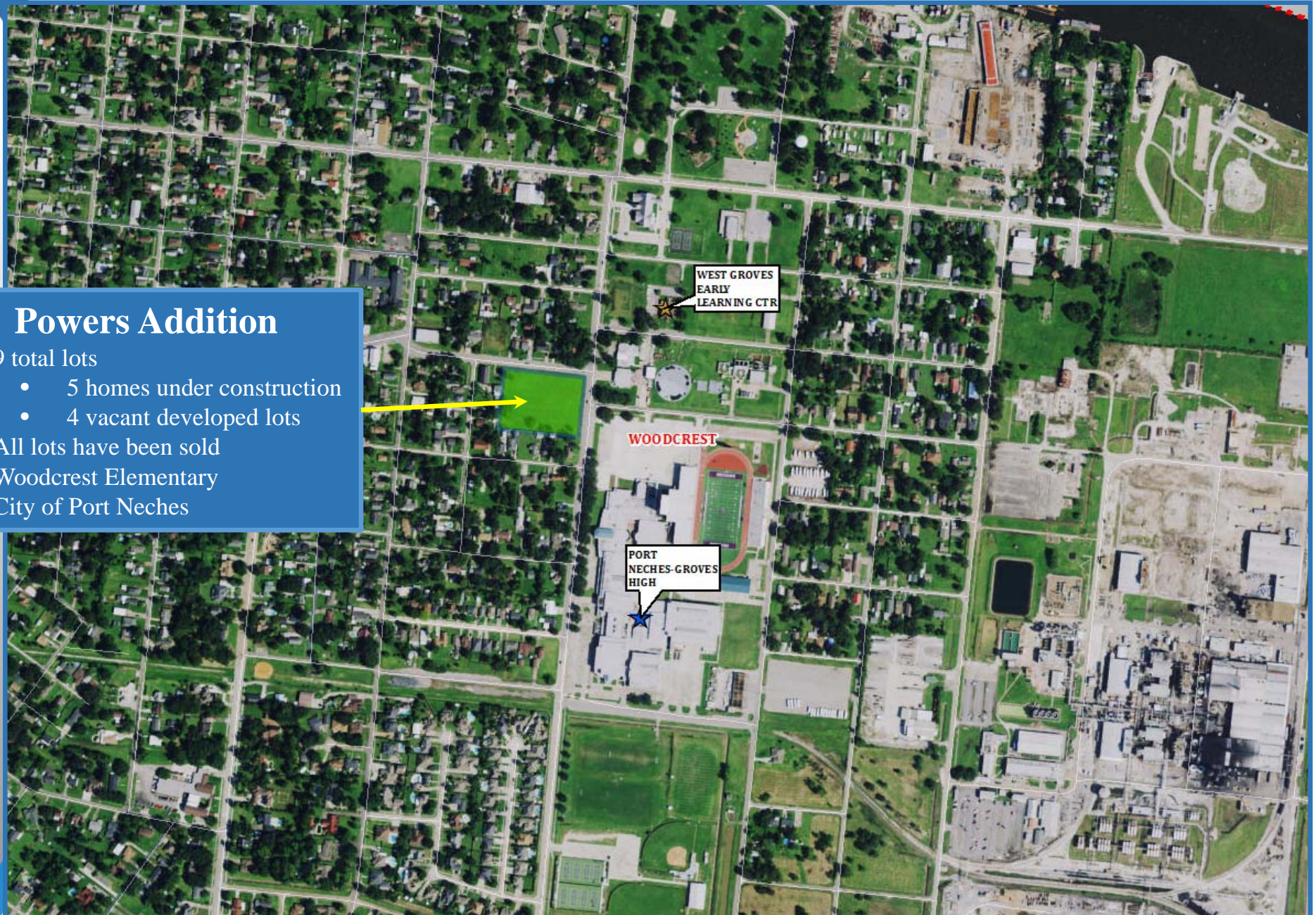


Active Subdivision

Powers Addition

Powers Addition

- 9 total lots
 - 5 homes under construction
 - 4 vacant developed lots
- All lots have been sold
- Woodcrest Elementary
- City of Port Neches





Enrollment History

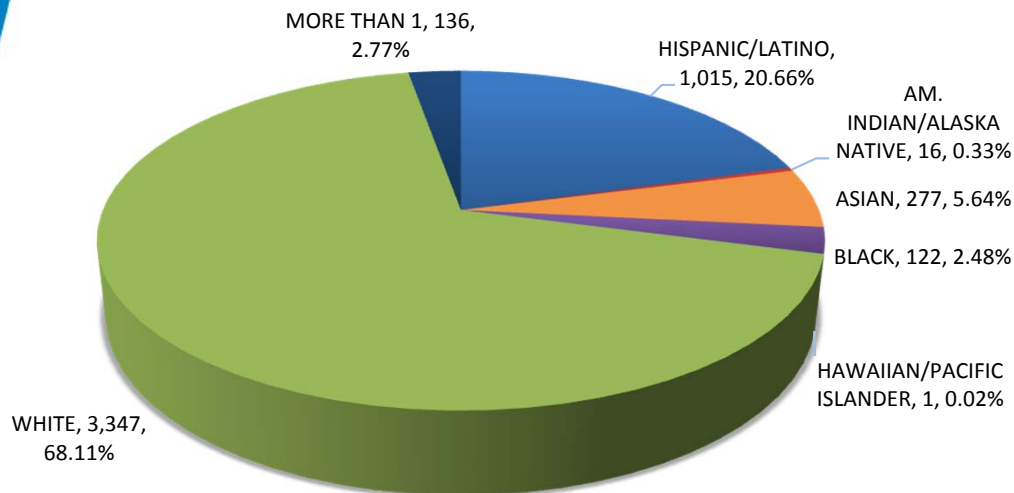
Year (Oct.)	EE/PK	K	1st	2nd	3rd	4th	5th	6th	7th	8th	9th	10th	11th	12th	Total	Growth	Percent
2011/12	134	344	345	319	344	359	348	385	374	333	387	357	351	331	4,711		
2012/13	119	439	366	355	328	342	368	361	393	374	373	377	334	334	4,863	152	3.23%
2013/14	109	346	439	365	358	345	346	381	367	394	385	347	351	321	4,854	-9	-0.19%
2014/15	112	368	357	430	354	370	345	355	390	386	418	368	330	331	4,914	60	1.24%
2015/16	105	375	376	372	435	374	389	361	364	389	409	385	355	298	4,987	73	1.49%

*Yellow box = largest grade per year
*Green box = second largest grade per year

2014/15 Student Race-Ethnicity Totals and Economically Disadvantaged

Year (Oct.)	Total	Black or African American	%	Hispanic	%	American Indian or Alaska Native	%	Asian	%	White	%	Two or more races	%	Native Hawaiian/ Other Pacific Islander	%
2011/12	4,711	113	2.4%	769	16.3%	33	0.7%	238	5.1%	3,503	74.4%	51	1.1%	4	0.1%
2012/13	4,863	109	2.2%	839	17.3%	28	0.6%	272	5.6%	3,548	73.0%	63	1.3%	4	0.1%
2013/14	4,854	127	2.6%	893	18.4%	28	0.6%	270	5.6%	3,428	70.6%	106	2.2%	2	0.0%
2014/15	4,914	122	2.5%	1,015	20.7%	16	0.3%	277	5.6%	3,347	68.1%	136	2.8%	1	0.0%

2014/15 STUDENT RACE/ETHNICITY



Year (Oct.)	Economically Disadvantaged	% ED
2011/12	1,694	36.0%
2012/13	1,660	34.1%
2013/14	1,953	40.2%
2014/15	1,896	38.6%





Ten Year Forecast

By Grade Level

Year (Oct.)	EE/PK	K	1st	2nd	3rd	4th	5th	6th	7th	8th	9th	10th	11th	12th	Total	Growth	Percent
2011/12	134	344	345	319	344	359	348	385	374	333	387	357	351	331	4,711		
2012/13	119	439	366	355	328	342	368	361	393	374	373	377	334	334	4,863	152	3.23%
2013/14	109	346	439	365	358	345	346	381	367	394	385	347	351	321	4,854	-9	-0.19%
2014/15	112	368	357	430	354	370	345	355	390	386	418	368	330	331	4,914	60	1.24%
2015/16	105	375	376	372	435	374	389	361	364	389	409	385	355	298	4,987	73	1.49%
2016/17	105	384	389	379	376	444	386	396	367	366	405	382	365	330	5,074	87	1.74%
2017/18	105	392	393	400	383	389	441	391	404	369	385	380	365	338	5,135	61	1.21%
2018/19	105	402	396	403	404	398	400	451	399	405	387	359	364	336	5,209	74	1.44%
2019/20	105	403	409	388	405	417	407	406	460	401	424	362	342	337	5,266	57	1.10%
2020/21	105	403	410	414	387	419	423	414	414	462	421	397	346	316	5,331	65	1.24%
2021/22	105	403	410	412	416	399	428	431	422	416	484	394	379	319	5,418	87	1.63%
2022/23	105	401	413	409	414	430	408	435	439	424	436	452	376	350	5,492	73	1.35%
2023/24	105	396	409	415	411	427	438	415	443	440	445	408	432	347	5,531	40	0.72%
2024/25	105	398	404	410	417	424	436	445	424	444	461	416	390	399	5,573	42	0.76%
2025/26	105	399	407	404	411	442	433	462	454	426	465	431	397	360	5,596	22	0.40%

*Yellow box = largest grade per year

*Green box = second largest grade per year

- Port Neches Groves ISD will reach 5,000 students by next fall
- 5 year growth = 344 students
- 2020/21 enrollment = 5,331
- 10 year growth = 609 students
- 2025/26 enrollment = 5,596



Ten Year Forecast

By Campus

		HISTORY	Current	ENROLLMENT PROJECTIONS									
CAMPUS	Capacity	2014/15	2015/16	2016/17	2017/18	2018/19	2019/20	2020/21	2021/22	2022/23	2023/24	2024/25	2025/26
WEST GROVES EARLY CHILDHOOD CTR	110	0	103	103	103	103	103	103	103	103	103	103	103
GROVES ELEMENTARY	500	334	363	407	409	388	385	397	414	424	435	439	449
PORT NECHES ELEMENTARY	460	381	400	422	421	410	439	445	414	414	431	422	426
RIDGEWOOD ELEMENTARY	440	438	452	450	448	446	429	419	429	419	415	413	412
TAFT ELEMENTARY	493	475	394	375	394	393	409	419	420	427	421	417	414
VAN BUREN ELEMENTARY	405	363	385	386	394	424	427	433	440	444	451	460	467
WOODCREST ELEMENTARY	352	345	329	319	334	344	342	345	354	349	346	341	330
ELEMENTARY SCHOOL TOTALS	2,760	2,336	2,426	2,463	2,503	2,508	2,534	2,561	2,573	2,580	2,601	2,594	2,601
Elementary Absolute Growth		28	90	37	40	5	26	27	12	6	22	-7	6
Elementary Percent Growth		1.21%	3.85%	1.51%	1.64%	0.20%	1.05%	1.07%	0.47%	0.25%	0.84%	-0.27%	0.25%
GROVES MIDDLE SCHOOL	740	568	548	544	571	616	634	644	621	626	647	668	695
PORT NECHES MIDDLE SCHOOL	780	563	565	584	592	638	632	645	647	671	650	644	646
MIDDLE SCHOOL TOTALS	1,520	1,131	1,113	1,128	1,163	1,254	1,266	1,289	1,268	1,297	1,297	1,312	1,341
Middle School Absolute Growth		-9	-18	15	35	91	12	23	-21	29	0	15	29
Middle School Percent Growth		-0.79%	-1.59%	1.35%	3.10%	7.82%	0.96%	1.82%	-1.63%	2.29%	0.00%	1.16%	2.21%
PORT NECHES-GROVES HIGH SCHOOL	1,640	1,436	1,439	1,474	1,460	1,438	1,457	1,472	1,568	1,606	1,624	1,658	1,645
HIGH SCHOOL TOTALS	1,640	1,436	1,439	1,474	1,460	1,438	1,457	1,472	1,568	1,606	1,624	1,658	1,645
High School Absolute Growth		41	3	35	-14	-22	19	15	96	38	18	34	-13
High School Percent Growth		2.94%	0.21%	2.43%	-0.95%	-1.51%	1.32%	1.03%	6.52%	2.42%	1.12%	2.09%	-0.78%
ALTERNATIVE SCHOOL		10	8	8	8	8	8	8	8	8	8	8	8
JEFFERSON COUNTY JJAEP		1	1	1	1	1	1	1	1	1	1	1	1
DISTRICT TOTALS	5,720	4,914	4,987	5,074	5,135	5,209	5,266	5,331	5,418	5,492	5,531	5,573	5,596
District Absolute Growth		60	73	87	61	74	57	65	87	73	40	42	22
District Percent Growth		1.2%	1.5%	1.7%	1.2%	1.4%	1.1%	1.2%	1.6%	1.4%	0.7%	0.8%	0.4%

*Yellow box = campus enrollment exceeds stated campus capacity



Summary

- Houston area housing market continues to grow in 2015.
- The Beaumont area continues to see economic and residential demand, with record home sales in 2015.
- Port Neches Groves has added more than 300 students in the last 5 years, making it the second fastest growing district in Region 5.
- The district is anticipated to reach 5,000 students by next fall.
- Five year enrollment growth of 344 students with fall 2020 enrollment = 5,331.
- Ten-Year enrollment growth of 609 students with fall 2025 enrollment = 5,596.